

# Moments

VOLUME 12

SUMMER  
SALE

*Now on*

# H A M M O N D S

THE FITTED FURNITURE COMPANY



Winner of 2019 Houzz Award

# SUMMER SALE

*Now on*

## Preface

A home is more than just a place, it's a feeling of safety and comfort; the place we always return to. Within the walls of home, it's an opportunity to make it your own, and no two will be the same. It's a chance for you to store your treasured mix of things exactly how you like and feel is right. Creating a clutter-free sanctuary filled with storage that makes you happy can make all the difference to create a welcoming home for years to come.

As the season turns from springtime showers to warmer days filled with fresh new sunshine, we want you to be inspired. Within our latest edition of Moments, we bring you interior transformations, from our real customer's homes to our showroom displays. We give you articles capturing the season like a pocket of warmth alongside our returning favourites.

Discover our latest offers and the savings to be enjoyed, including more storage for you, something we feel passionate about at Hammonds. Flick through this season's magazine to discover all the latest things from Hammonds. We hope you enjoy this volume of Moments. For more inspiration like this, take a look at our inspiring blogs and real room articles packed full of home décor tips, seasonal recipes and more.

# Moments

# Contents



06

## TIRED TO TRIUMPHANT

Using seasonal tones to inject modern décor into a dated showroom display.



12

## A REVITALISED YORK SHOWROOM

Within the beautiful city of York, discover the new inspiring collection of displays.



16

## A SPECIAL, SPARKLING MOJITO

A refreshing cocktail to complete a warm, summer evening.

## A GLAMOROUS, MODERN DRESSING ROOM

The contemporary Elkin collection and brushed velvet fabric come together luxuriously.



## BOOK CLUB

Find a patch of summer sun and dive into these page turners.



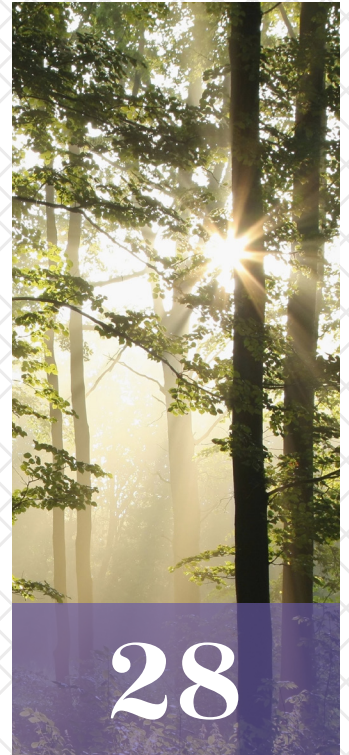
## CLASSIC CABINETRY FOR A TRADITIONAL KITCHEN DESIGN

Discover the transformation of a real customer's kitchen.



## FOREST BATHING THIS SUMMER

The mental and physical benefits of Shinrin-Yoku.



# Tired to triumphant

USING SEASONAL TONES TO INJECT MODERN DÉCOR INTO A DATED SHOWROOM DISPLAY.



Our shaker style real wood veneer range within our Hinckley showroom recently undertook an uplifting redesign with fresh, modern styling for the season. Before, the display featuring hinged wardrobes

with a sloped ceiling angle, matching bedside cabinets and a headboard in the Light Oak finish was paired alongside wintery reds and tartans. Looking dated and tired, the displays team reinvented the décor to match the furniture. The

team chose a bold green, Amazon Jungle by Dulux, with a yellow base to pull out the golden tones from within the oak finish. Using the angular shapes inspired from the shaker style furniture, panelling on the wall gave the room a distinguishing feature

in keeping with the design of the room.

A new handle was used with a gold finish to replace the previous one with a nickel based colour. This new bright, summery colour draws out the amber tones from the oak and revitalises the palette. These tones are entwined with new fabric textures and colours, including a recently upholstered headboard in the woven Vienna Dove Grey from the Hammonds collection. This calming tone is subtle alongside the rich patterned Trillion Quartz fabric from Chase Erwin with a brush fringe from Samuel & Sons. This bold design resembles a slight tribal theme alongside the atmospheric jungle green tone. An eclectic mix of antique brass accessories and faux foliage add to the yellow based palette and jungle story. This eye catching, bold combination, creates a dramatic design to inspire. Depending on the natural light available this palette can be adapted to your preference and style.

When restyling a display like this, it highlights the longevity of the furniture that we create and fit into the customer's home. As the quality of the furniture remains over time, a fresh new look is easy to achieve ▷▷



After







by adapting the décor around it with a variety of looks to go with the tones. In this case, the neutral tone of oak allowed for a variety of optional palettes. Even more timeless finishes within our collection include white and greys.

HAMMONDS

THE FITTED FURNITURE COMPANY

SUMMER SALE

£500

FREE

PREMIUM STORAGE\*

\*When you spend over £2,500 on fitted furniture.

PLUS AN EXTRA

25% OFF

Selected finishes

[Hammonds-uk.com](http://Hammonds-uk.com)



# Storage for your summer

AN UPGRADE YOU WON'T WANT TO MISS.

**W**e believe that life is better with storage. When you have a place for everything, you'll no longer be searching for lost items, or feel dragged down with clutter. By storing them in their place, keeping items that 'spark joy' as Marie Kondo says, it will allow your home to feel more welcoming and relaxing.

In our summer sale, we're giving you £500 worth of premium storage to upgrade to, plus an extra 25% off selected finishes. This means more internal storage solutions from our premium fully lined wardrobes to choose that benefit your lifestyle and needs, for free on top of your order. See what that looks like by getting



to know our variety of storage solutions.

Do you need a dedicated space for your shoes? If you find your smart shoes, trainers and sandals have a habit of finding themselves piled up or lost, create the space they can call their home. Soft close pull out shoe racks can do just that. Choose how many you'll need and bespoke design these into your wardrobe.

Perhaps you're the type of person who likes to be prepared in the morning with the outfit ready to go. With a pre-dresser, discreetly hidden within the wardrobe door, this is easily done. A uniquely shaped hanger and shelving for accessories and shoes can help you stay organised with your outfit choice.

Make the most of your tall ceilings in your wardrobe with a counter balance hanging rail. A tall hanging rail on a hinge with a clever handle to adjust the height; utilise your

space efficiently with this solution.

If you find yourself frustrated ironing trousers you've already ironed, a pull-out trouser rail could be the solution for you. Neatly



separated and stored, this trouser rail leaves your items with that just pressed look and easily accessible.

Discover these storage solutions and so many more by speaking with your designer. Allow them to create your free computerised furniture design filled with your complimentary upgraded storage solutions with your order. See your perfect room come to life and feel satisfied with the great savings made in the summer sale now on.

# A revitalised York showroom

WITHIN THE  
BEAUTIFUL  
CITY OF YORK,  
DISCOVER THE  
NEW INSPIRING  
COLLECTION  
OF DISPLAYS.

The historic city of York boasts some of the most beautiful architecture, from York Minster to the city walls. With a bustling centre filled with independent shops and a variety of unique restaurants and bars, York is unmistakably a captivating city. Our furniture showroom within Rodgers of York department store was recently rejuvenated with beautiful new displays showcasing the variety that Hammonds offers. Find out more about the new showroom from Store Manager Cathy Acaster who has been with the company for 5 years. >>





Lots of beautiful headboard options

**SHOWROOM LOCATION**

Within Rodgers of York,  
Monks Cross, Huntington,  
York, YO32 9JR  
01904 610804



The Hammonds Way



**HAMMONDS**  
THE FITTED FURNITURE COMPANY

Sliding Wardrobes



Sloped Ceilings  
can become  
integral to the  
design

## Can you tell me about the team at the York showroom?

We are a team of 2 at York including Tom Nightingale who is a sales advisor and started with us 2 years ago and myself, who started with Hammonds 5 years ago. We work as a great team and are so pleased to display to visitors this beautiful newly refurbished showroom.

## What new ranges do you have in store?

Our modern ranges include Avon in Light Grey with mirrored doors as a fitted bedroom design and Avon in White as a living room. We also have mirrored sliding wardrobes with a gloss Cashmere frame. For classic collections we have Croft in White which showcases a great under-stairs storage solution, a walk in wardrobe with 'his' and 'her' sides in Willesley in Rural Oak and the elegant Harpsden in a variety of tones.

Alongside all these we also have our ranges here previously which have been restyled with modern décor and soft furnishings, showcasing the furniture's longevity. These ranges include Willoughby in Light Oak, Vigo in Dark Pine and Libretto in Avola White.





### What storage solutions are displayed in the showroom?

We have such a wide variety of storage solutions for the home. There is a corner wardrobe and corner dressing table in Libretto which makes the best use of those awkward angles. So many of our ranges have different interior storage solutions, so we encourage visitors to open wardrobe doors and cupboards to see inside. We have pull out shoe racks and trouser rails to double hanging rails and top boxes. In addition, the Vigo range displays a glamour unit, perfect for a discreetly hidden area to store accessories, perfumes and jewellery.

### Can you tell me what else Rodgers of York has for shoppers?

After a bit of Hammonds shopping, Rodgers department store has its own tea room with table service, they serve homemade sandwiches, cream teas and soups. Hammonds concession is located within the bedroom department alongside a choice of beds and mattresses, in addition there is a curtain and blind department, flooring department and lighting department.

### What else would you recommend on a day out in York?

Our showroom is a 2 minute walk from Vanguard where you will find Marks and Spencer, Next and John Lewis nearby and restaurants including Nandos, Giraffe, Prezzo and Frankie and Bennies. A short walk away is the Park and Ride where you can catch a bus every 10 minutes to the city centre, there you can see the historic beautiful city. I recommend going on an open top bus tour or a boat ride down the river, visit York Viking centre or even the York dungeons. Head to Clifford's Tower or the York Castle Museum which used to be a prison. There are plenty of things to do in York to keep everyone happy; it really is a beautiful city.



# A special, sparkling Mojito

A REFRESHING COCKTAIL TO COMPLETE  
A WARM, SUMMER EVENING.

**I**n the warm weather and long light evenings, it's a great excuse to get together with some friends for a barbeque or alfresco dinner party. This summertime cocktail is a great twist on a classic, replacing the soda water with some sparkling wine; it adds a dry yet sweet addition to the sharp lime and cool mint.



## Ingredients

- 50ml white rum
- 12.5ml sugar syrup
- 25ml lime juice
- 100ml Champagne or Prosecco
- 8 mint leaves
- Icing sugar, to garnish

## Method

1. Place the mint in the glass and press gently with a muddler.
2. Add the rum, sugar syrup and lime juice. Fill the glass halfway up with crushed ice, pour over the Champagne or Prosecco and stir well.
3. Top up with more ice, garnish with a dusting of icing sugar and serve.

*Recipe source: Good Together: Drink & Feast With Mr Lyan And Friends, by Ryan Chetiyawardana*







# A glamorous, modern dressing room

THE CONTEMPORARY ELKIN COLLECTION AND BRUSHED VELVET FABRIC COME TOGETHER LUXURIOUSLY.

Mr and Mrs Tonkiss visited Hammonds looking to create a light dressing room with lots of storage that would pair beautifully with their modern home. They chose the Elkin collection with a gloss finish in Frost; the crisp white with a linear design is not only contemporary but also reflects the natural light in the space. The couple also found the tab style handle unique and worked well with the angular style for the range. They fell in love with the collection at their local Hammonds showroom and couldn't wait to see how Hammonds designer, Jason Thomas, would use the range to create their dressing room. In a room with sloped ceilings, the floor to ceiling furniture was designed to work alongside these angles with hanging rails and shelving placed perfectly.

An island was designed in the room to break up the space, with a combination

of two and three drawer cabinets finished with a seat pad. This deep buttoned upholstered seating was handmade by the Hammonds upholstery team using Hammonds designer fabric in Karina Steel. The sumptuous deep buttoning and brushed velvet adds that touch of luxury to the room. The island and the matching low level seating run below the window creates a glamorous place to sit and get ready while looking out at the view. In addition to this, the island drawer provides extra storage and includes a jewellery tray.

The aesthetics of the furniture and the way it works in the room is an important factor which is considered in the design process. As the eye travels from the low level seating below the window over the island and to the wardrobe, it not only follows the height of the sloped ceiling but also the direction of the natural light, working with the room harmoniously. ▷▷

# SUMMER SALE

*Now on*

Mrs Tonkiss was thrilled with her new dressing room and the support of the Hammonds team throughout the process. She was pleased with how bright and clean the gloss, contemporary range looked and the amount of storage the furniture now gave her.





# Book Club

FIND A PATCH OF SUMMER SUN AND DIVE INTO THESE PAGE TURNERS.

If you're looking for your next page-turning book for the season, perhaps some sun-lounger reading for your next holiday, you can't go wrong with our top three recommended books. From Fiction to Non-Fiction, each one will have you gripped; the question you need to ask yourself is which one to choose first.

For more inspiring reads and to leave your review, please visit our Book Club on our blog at [www.hammonds-uk.com/blog](http://www.hammonds-uk.com/blog).

## **Waste Not: Make a Big Difference by Throwing Away Less** – *Erin Rhoads*

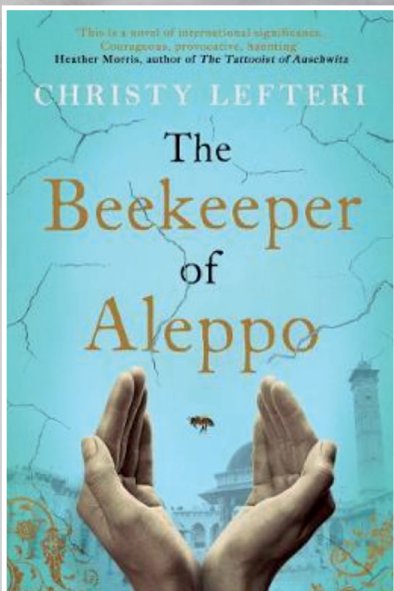
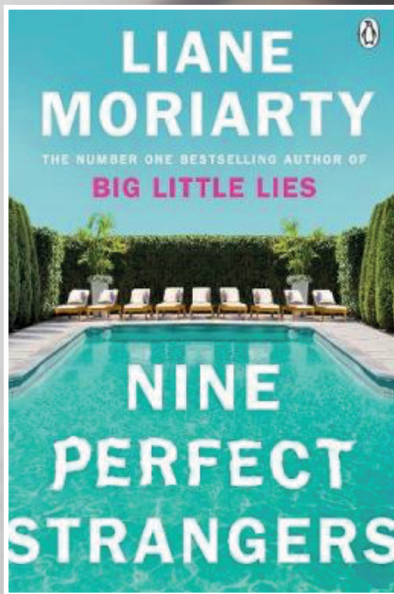
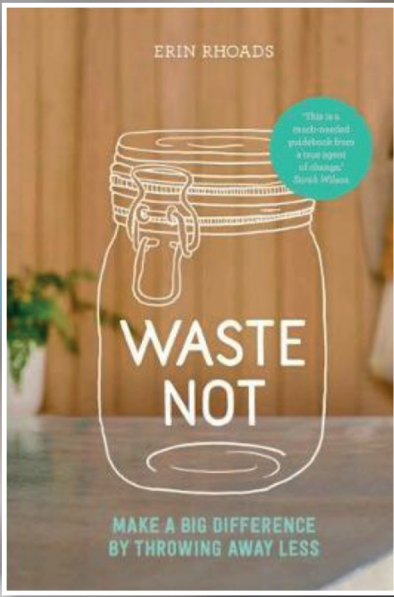
In a world surrounded by single use plastics as part of our daily life, from shrink-wrapped vegetables to disposable coffee cups, the impact on our seas, wildlife and overall planet we call home is huge. But is there really anything we can do about this problem? Or is this the price we have to pay for convenience? Erin Rhoads went from eating plastic-packaged take-away to becoming one of Australia's most popular eco-bloggers. In *Waste Not*, she shares everything she's learnt from her own funny, inspiring and far from perfect journey to living with less waste. In addition, the book itself has been produced in an eco-friendly way too. This book is highly recommended. It is inspiring, insightful and with her witty writing style, an entertaining read.

## **Nine Perfect Strangers** – *Liane Moriarty*

In an idyllic health-and-wellness resort, *Tranquillum House* promises total transformation. Nine stressed city dwellers are eager to get away from their literal and mental baggage, instead succumbing to relaxation and meditation. Watching over them is the resort's director, a woman on a mission. But, as it unravels, with a dark agenda that none of the guests could have imagined. This book is a thoroughly entertaining one, with slow-burning plots this is a suspenseful page-turner that will have you laughing yet keep you completely hooked.

## **The Beekeeper of Aleppo** – *Christy Lefteri*

Living a simple life, rich in family and friends, in the beautiful Syrian city of Aleppo, Nuri is a beekeeper and his wife, Afra an artist. When all they care for is destroyed by war, they are forced to escape. As Nuri and Afra travel through a broken world to the hope of safety, they must confront not only the pain of their own unspeakable loss but the dangers that would overwhelm the bravest of souls. *The Beekeeper of Aleppo* is a testament to the triumph of the human spirit. It is a beautifully crafted book that is both moving and compassionate.



# Classic cabinetry for a traditional kitchen design

DISCOVER THE TRANSFORMATION OF A REAL CUSTOMER'S KITCHEN.

Mr and Mrs Wright came to Hammonds looking to replace their tired kitchen with a beautiful new shaker style kitchen design that complemented the distinctive features and character of their home, a reconverted old village school.

After a great experience with their new fitted Hammonds bedroom, the couple booked a design visit for their kitchen. The Hammonds kitchen designer sat down with the couple to discuss their storage needs and style preferences for their new kitchen within the reconverted village school.

The couple loved the look of the Harraton range, a shaker style design with a beaded finish in the inside of the frame. The range continued that classic feel while the painted finish added a touch of elegance and sophistication. From the selection of 13 painted shades, Mr and Mrs Wright chose Alabaster, a neutral tone to reflect the natural light in the space.

This range and tone was paired alongside the durable Quartz worktop with a marble effect look with tones of light, dark and creamy grey. ▷▷







*"We love the look of the kitchen cupboards. It makes the kitchen look and feel much brighter, creating a lighter atmosphere for cooking and socialising."*

**Mr and Mrs Wright**



The kitchen designer created a U-shaped kitchen design with a breakfast bar using the overhanging

worktop, a perfect space to grab a quick bite to eat. Clever storage solutions such as a LeMans pull out corner cupboard shelving made the most of this awkward angle,

meaning an end to reaching into the depth of the cupboard to retrieve items. An integrated dishwasher and fridge allowed the design to flow seamlessly with these appliances hidden beautifully behind the cabinetry. A new yet traditional AGA

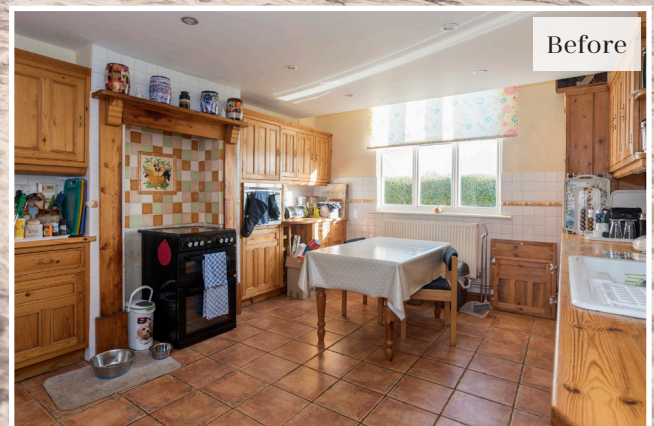


completed the classic look of the kitchen and the modern colour worked well with the worktop finish. AGA cookers are very efficient and create a traditional look in a modern kitchen. A double larder unit with 5 adjustable shelves were also included in the

design, perfect for storing long lasting food supplies like pasta, rice and tins.

The couple were delighted with their new kitchen, particularly the look of the

classic painted style of the kitchen cabinets and the additional storage space it gave them.



Before

# Forest bathing this summer

THE MENTAL AND PHYSICAL  
BENEFITS OF SHINRIN-YOKU.

Imagine yourself immersed in a forest; tall pine trees surround you, beams of sunshine scatter on the bark covered earth and all you can hear are the delicate chirps of birdsong. A soft breeze sweeps by you bringing with it aromas from the ferns as it blows through the branches, gentling knocking them against each other.

Shinrin-yoku is a Japanese form of nature therapy which is translated as making contact with and taking in the atmosphere of the forest. The practice has been

scientifically proven to improve your mental and physical wellbeing. In a day and age where many of us are bound by office jobs, spending the majority of the week inside, it's no wonder that stress, anxiety and depression are rising. In a study conducted in 2010 by Park BJ, it was found that after exposure to forest environments, subjects had a lower concentration of cortisol, lower pulse rate, lower blood pressure, greater parasympathetic nerve activity, and lower sympathetic nerve activity.



It may come as no great surprise that spending time outside is good for you but it may surprise you if you think about your daily routine and ask yourself when the last time was that you did this and really appreciated it. Some forest bathers organise this in groups, finding a tree they feel a connection with, talking together about what it means to be at peace and calm. A great idea for some, but something about finding your own little patch of forest or woodland and taking the time to relax at your own pace

seems somewhat more personal.

As the summer sun begins to shine more brightly perhaps now's the chance for you to reconnect with nature and feel the benefits. Take it at your own time and pace, doing what feels right for you. With any luck this may have you feeling inspired and ready for Shinrin-Yoku. If the logical thinker in you holding you back, at least there are some scientific statistics to assure your office bound self of the benefits of a natural escape.

Next time...

# Moments

VOLUME 13

We hope you enjoyed this edition of Moments with inspiration for the start of the summer season. As Moments 13 comes along, summertime will be in full swing, a time to spend with family and friends in the warmth of the sunshine, and perhaps a British downpour every now and then. We'll bring you even more inspiration with new things from Hammonds

including more décor photography from real customer's rooms and our own showrooms. In addition we'll bring you our returning favourites including a recipe and our top book club reads. If you can't wait until the next edition, follow our social channels and stay tuned to our blogs to keep up to date with our latest activities and inspiration for your home.



We'd love you to follow our journey online.

SUMMER  
SALE

Now on

# The dream is closer than you think..

YOU CAN GET CLOSER TO YOUR IDEAL HOME  
STORAGE SOLUTIONS AT OVER 90 HAMMONDS  
SHOWROOMS ACROSS THE UK.

<b>Abingdon</b>	01235 528 829	<b>Jersey</b>	01534 625 712
<b>Basildon</b>	01268 286 880	<b>Kingston</b> - Bentalls Department Store	0208 546 9123
<b>Bilston</b> - Leekes Department Store	01902 405 659	<b>Leamington Spa</b>	01926 881 925
<b>Bolton</b> - Furniture Village	01204 693 801	<b>Leeds</b> - Christopher Pratts	0113 244 6363
<b>Boston</b> - Downtown	01205 310 581	<b>Leeds Birstall</b> - Furniture Village	01924 470 899
<b>Bristol</b> - Furniture Village	0117 950 9641	<b>Leicester</b> - NEXT	0116 289 8437
<b>Bristol</b> - Park Furnishers	0117 336 4886	<b>Llantrisant</b> - Leekes Department Store	01443 228 820
<b>Bristol</b> - NEXT	0117 950 4595	<b>Macclesfield</b> - Arighi Bianchi	01625 618 303
<b>Bromley</b>	0208 464 7810	<b>Maidstone</b> - Newnham Court Shopping Centre	01622 734 563
<b>Bury St Edmunds</b> - Glasswells	01284 829 111	<b>Maidstone</b> - NEXT	01622 273 7811
<b>Camberley</b> - Next Home	01276 65014	<b>Manchester</b> - Furniture Village	0161 872 7459
<b>Canterbury</b> - Nasons	01227 761 097	<b>Melksham</b> - Leekes Department Store	01225 707 174
<b>Cardiff</b> - NEXT	02920 228 377	<b>New Malden</b> - Furniture Village	0208 949 9146
<b>Cheltenham</b>	01242 243 428	<b>Newcastle</b> - Fenwick Department Store	01912 324 608
<b>Chester</b> - Alan Ward Furnishings	01244 372 987	<b>Norwich</b> - Aldiss	01603 614 068
<b>Chorley</b> - Doorway to Value	01257 269 062	<b>Norwich</b> - NEXT	01603 744 713
<b>Christchurch</b> - Cookes Furniture Store	01202 488 391	<b>Nottingham</b>	0115 950 9194
<b>Colchester</b> - Hatfields	01206 562 715	<b>Nuneaton</b>	02476 387 769
<b>Crawley</b>	01293 517 247	<b>Peterborough</b>	01733 221 681
<b>Cross Hands</b> - Leekes Department Store	01269 844 926	<b>Plymouth</b> - NEXT	01752 224 614
<b>Croydon</b> - Furniture Village	0208 686 4140	<b>Poole</b> - Furniture Village	01202 669 740
<b>Croydon</b> - NEXT	0208 680 2911	<b>Preston</b>	01772 253 498
<b>Dudley</b> - Cousins Furniture Store	01384 258 005	<b>Reading</b> - Furniture Village	0118 959 4259
<b>Edinburgh</b> - NEXT	0131 440 0325	<b>Romford</b> - Furniture Village	01708 371 487
<b>Edmonton</b> - NEXT	0208 887 0523	<b>Salford, Manchester</b> - Cousins Furniture Store	0161 872 1412
<b>Erdington</b> - Cookes Furniture Store	0121 377 7517	<b>Sheffield</b> - NEXT	0114 261 8722
<b>Failsworth</b> - Housing Units	0161 688 7350	<b>Sheffield</b> - Ponsford	0114 258 2992
<b>Fakenham</b> - Aldiss	01328 863 122	<b>Shepton Mallet</b> - Haskins Retail Park	01749 345 283
<b>Farnborough</b> - Furniture Village	01252 542 955	<b>Shoreham</b> - NEXT	01273 594 783
<b>Friern Barnet</b>	0208 361 4212	<b>Shrewsbury</b> - Alan Ward Furnishings	01743 460 177
<b>Gateshead</b> - Furniture Village	0191 460 8959	<b>Slough</b> - Furniture Village	01628 668 555
<b>Gibraltar</b>	0035 020 041994	<b>Solihull</b> - Cousins Furniture Store	0121 708 2097
<b>Gillingham</b> - Furniture Village	01634 233 237	<b>Southampton</b> - Furniture Village	02380 338 182
<b>Glasgow</b> - Forrest Furnishings	0141 959 5659	<b>Southport</b> - Stokers	01704 547 144
<b>Glasgow</b> - NEXT	0141 886 5415	<b>Southsea</b> - The Fitted Bedroom Centre	02392 833 918
<b>Grantham</b> - Downtown Superstore	01476 568 034	<b>Stockton on Tees</b> - Furniture Village	01642 604 123
<b>Guernsey</b>	07781 146 969	<b>Telford</b> - Furniture Village	01952 293 673
<b>Guildford</b> - Furniture Village	01483 536 964	<b>Thurrock</b> - Furniture Village	01708 867 258
<b>Hedge End</b> (Southampton)	01489 786 157	<b>Tillicoultry</b> - Sterling Furniture	01259 751 882
<b>Hedge End</b> (Southampton) - NEXT	01489 783 258	<b>Torquay</b> - Charltons	01803 214 891
<b>Hereford</b> - Annetts	01432 278 133	<b>Trafford</b> - NEXT	0161 749 7513
<b>High Legh</b> - High Legh Garden Centre	01925 757 196	<b>Truro</b>	01872 241 559
<b>High Wycombe</b> - Furniture Village	01494 533 881	<b>Tunbridge Wells</b> - Furniture Village	01892 535 361
<b>Hinckley</b>	01455 631 902	<b>Waltham Cross</b> - Fishpools	01992 623 555
<b>Hull</b> - NEXT	01482 826 871	<b>Warrington</b> -NEXT	01925 653 745
<b>Ipswich</b> - Glasswells World of Furniture	01473 280 612	<b>Watford</b> - Furniture Village	01923 238 155
<b>Ipswich</b> - NEXT	01473 610 398	<b>York</b> - Rodgers of York	01904 610 804
<b>Isle of Man</b> - A J Millichaps	01624 813 636		

HAMMONDS  
THE FITTED FURNITURE COMPANY

